

How to SFTP Files to `nice.fas.harvard.edu` from Windows

Recall that `nice.fas.harvard.edu` refers to a cluster of computers running Linux on which you have an account (your so-called FAS account). On this cluster you have several megabytes of storage space (your so-called home directory). To SFTP files to your account means to upload files to your home directory via an SFTP client, a program that “speaks” SFTP.

Distinct from `nice.fas.harvard.edu` is `fas.harvard.edu`, which refers to a separate cluster of computers intended for non-instructional purposes. You shouldn’t SSH to `fas.harvard.edu` for CSCI E-259, but you may SFTP files to it, as your same home directory is accessible on both `nice.fas.harvard.edu` and `fas.harvard.edu`. For simplicity, this document explains how to SFTP files to `fas.harvard.edu`, as most SFTP clients on campus are already configured for `fas.harvard.edu` but not `nice.fas.harvard.edu`. However, you may certainly SFTP files to `nice.fas.harvard.edu` instead.

You’re welcome to use any SFTP client for CS 50. This document explains how to install and use SecureFX, commercial software for Windows for which Harvard has a site license; it’s installed on most PCs around campus and can also be installed on yours.

Table of Contents

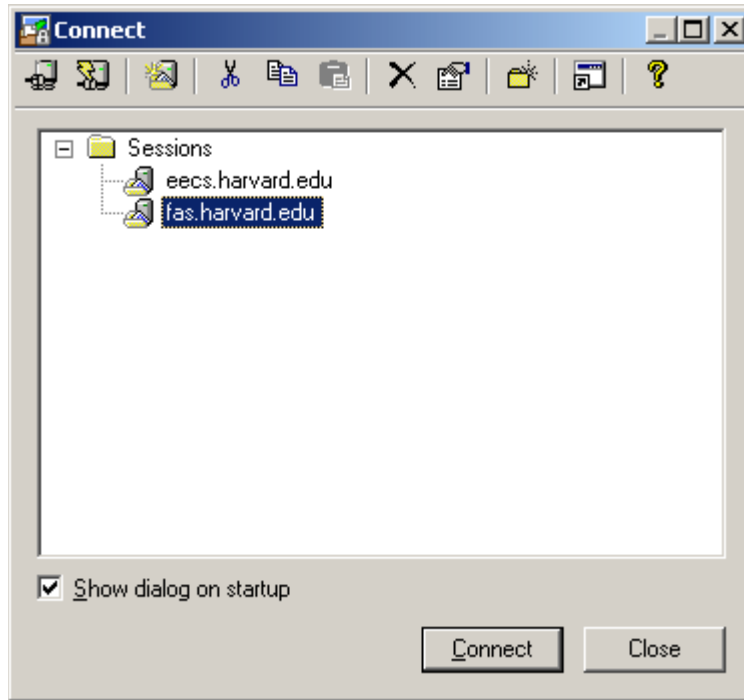
Installing SecureFX.....	2
Launching SecureFX.....	3
Creating a Session.....	4
Using SecureFX.....	7

Installing SecureFX

If SecureFX is not already installed on your computer, download the installer for SecureFX to your desktop via the course's website under **Software**. Double-click the installer's icon and follow the on-screen directions. It's fine to breeze through them, leaving all defaults selected.

Launching SecureFX

Launch SecureFX via its icon. You should then see a window like the below appear. If not, make it appear by going to **File → Connect...**



The window you see may or may not list these same sessions. If `fas.harvard.edu` does not appear in the list, proceed to **Creating a Session**, below. If `fas.harvard.edu` does appear in the list, skip to **Using SecureFX**.

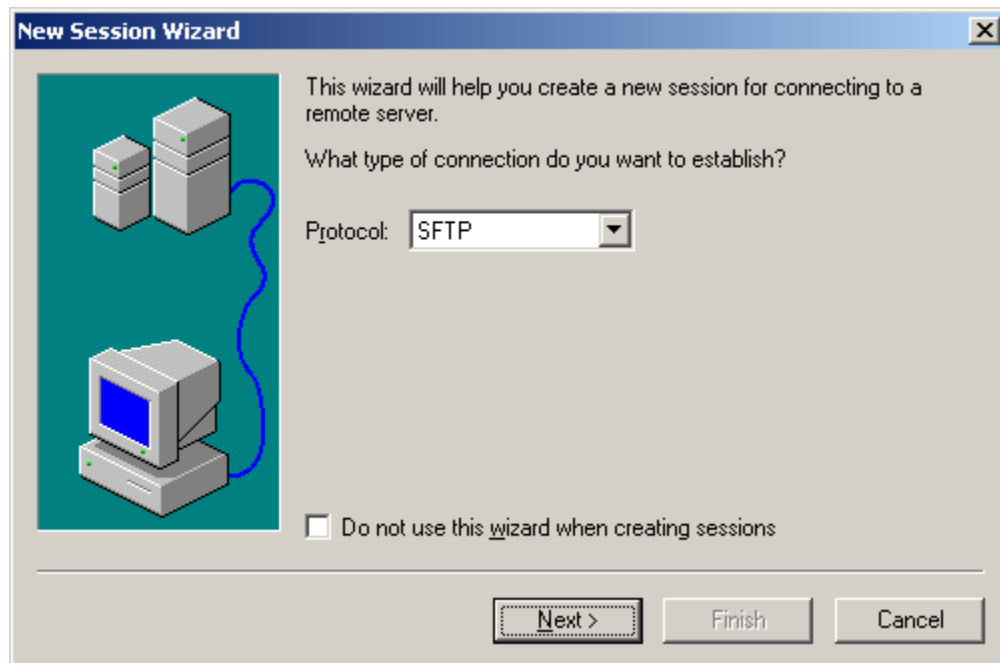
Creating a Session

The PCs in Harvard's labs should already have a session configured for `fas.harvard.edu`. If you're using SecureFX on your own computer, you should need to create a session for `fas.harvard.edu` only once, if at all.

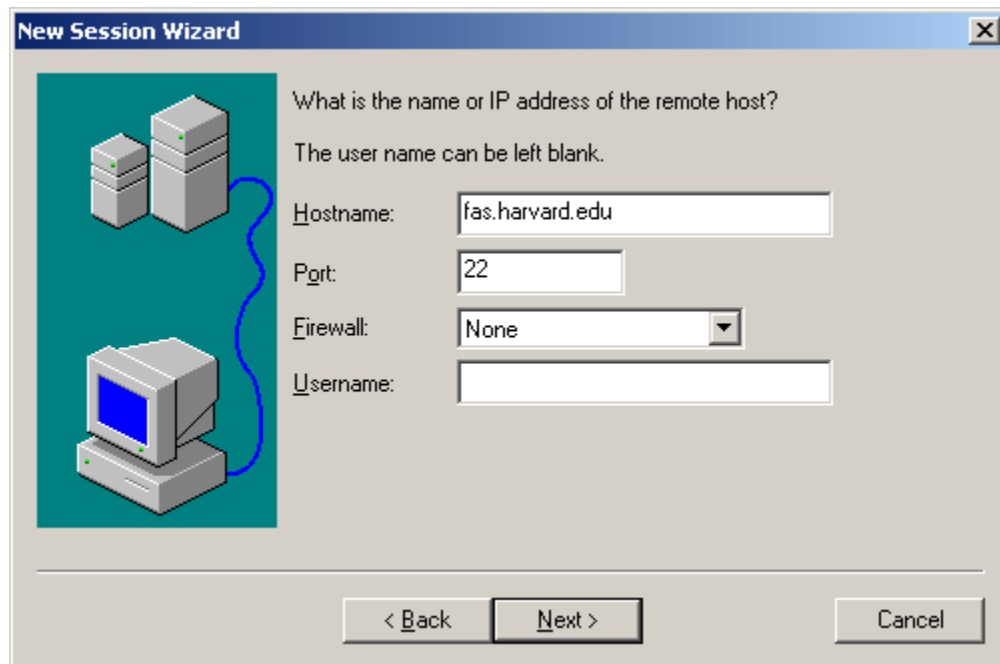
In the **Connect** window (pictured above), click the third icon over from the top-left that looks like the below.



Make the window that appears look exactly like the below.



Click **Next** and make the window that appears look exactly like the below.



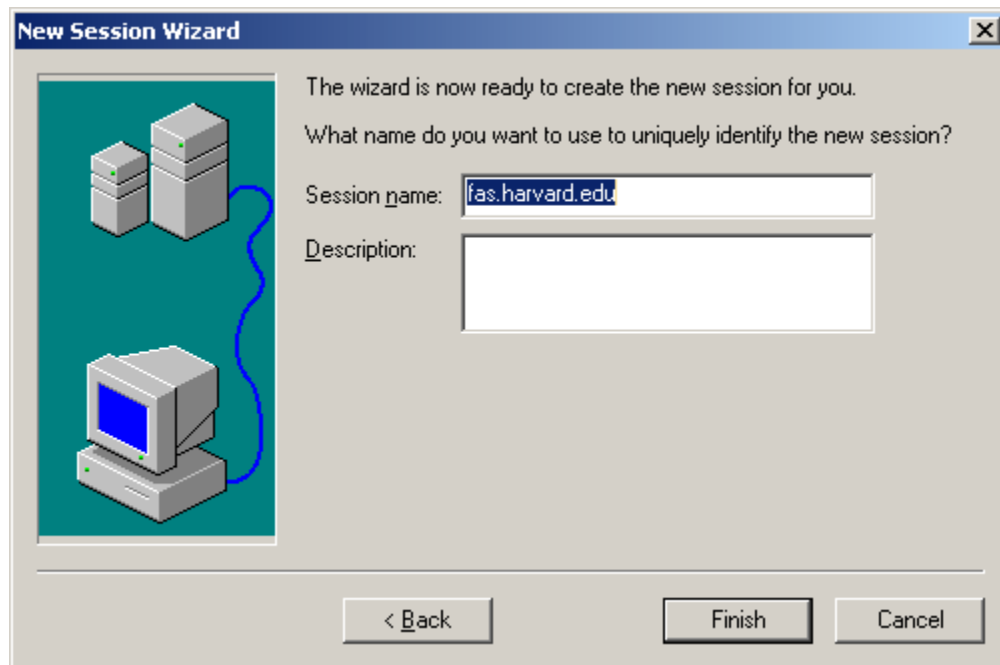
The image shows a 'New Session Wizard' dialog box. On the left, there is a graphic of a server rack connected to a desktop computer. The main text asks for the remote host name or IP address. Below this, it states 'The user name can be left blank.' There are four input fields: 'Hostname' with 'fas.harvard.edu', 'Port' with '22', 'Firewall' with a dropdown menu set to 'None', and 'Username' which is empty. At the bottom, there are three buttons: '< Back', 'Next >', and 'Cancel'.

What is the name or IP address of the remote host?
The user name can be left blank.

Hostname: fas.harvard.edu
Port: 22
Firewall: None
Username:

< Back Next > Cancel

Click **Next** yet again and make the window that appears look exactly like the below.



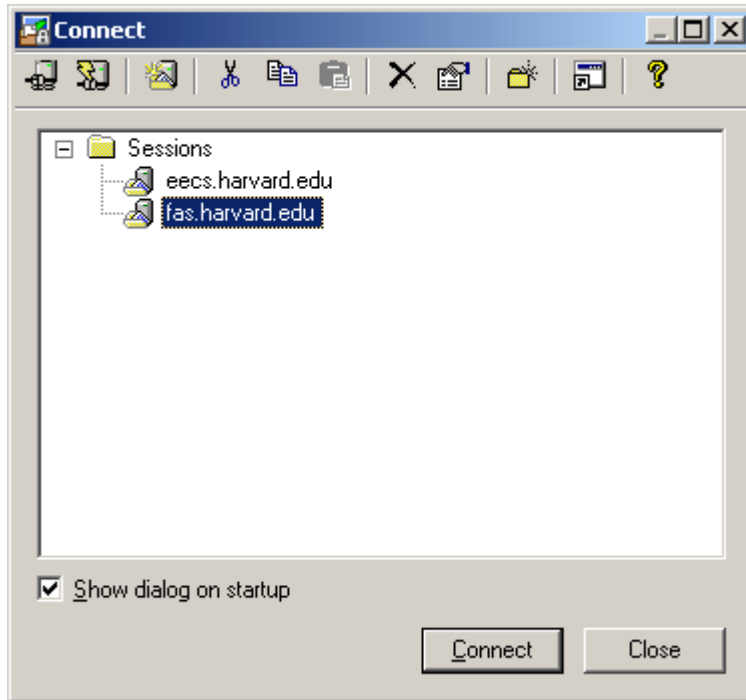
The image shows the 'New Session Wizard' dialog box at a later stage. The text now says 'The wizard is now ready to create the new session for you.' and asks for a session name. The 'Session name' field contains 'fas.harvard.edu' and is highlighted. There is an empty 'Description' field below it. At the bottom, the buttons are '< Back', 'Finish', and 'Cancel'.

The wizard is now ready to create the new session for you.
What name do you want to use to uniquely identify the new session?

Session name: fas.harvard.edu
Description:

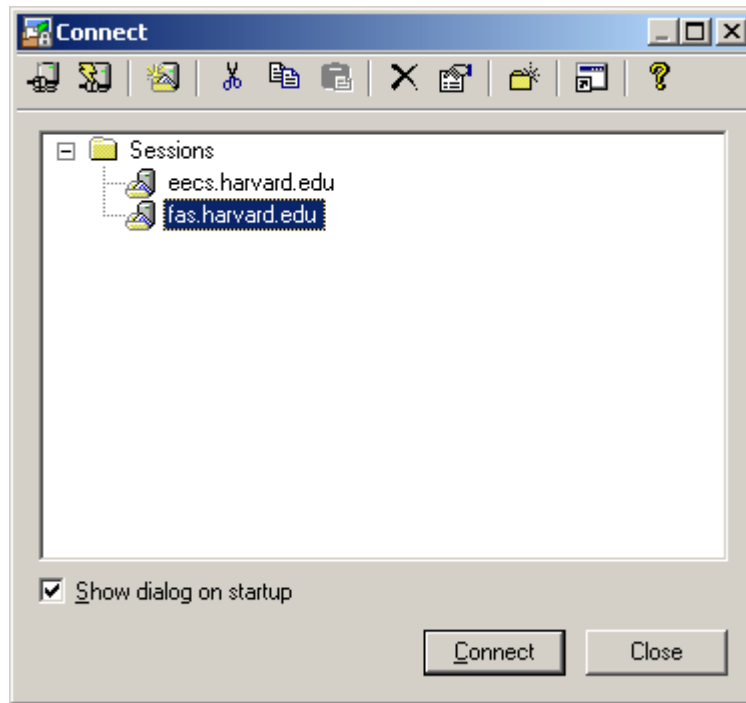
< Back Finish Cancel

Finally, click **Finish**. You should see a window like the below appear. Again, the window you see may or may not list as many sessions, but it should now at least include `fas.harvard.edu`.

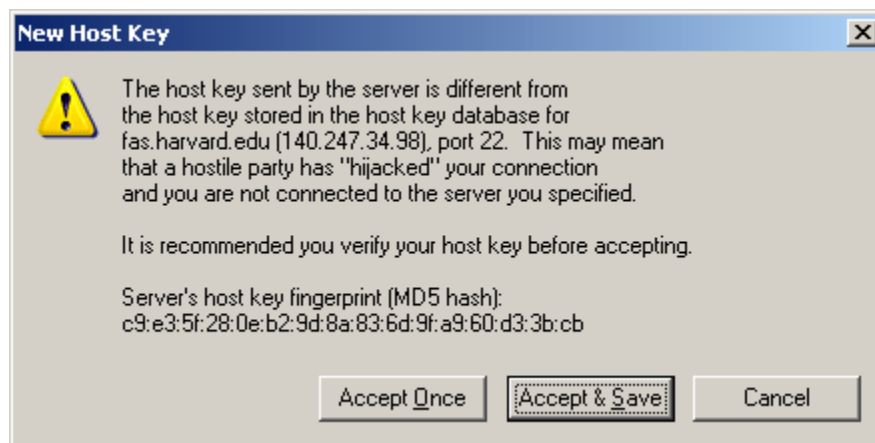


Using SecureFX

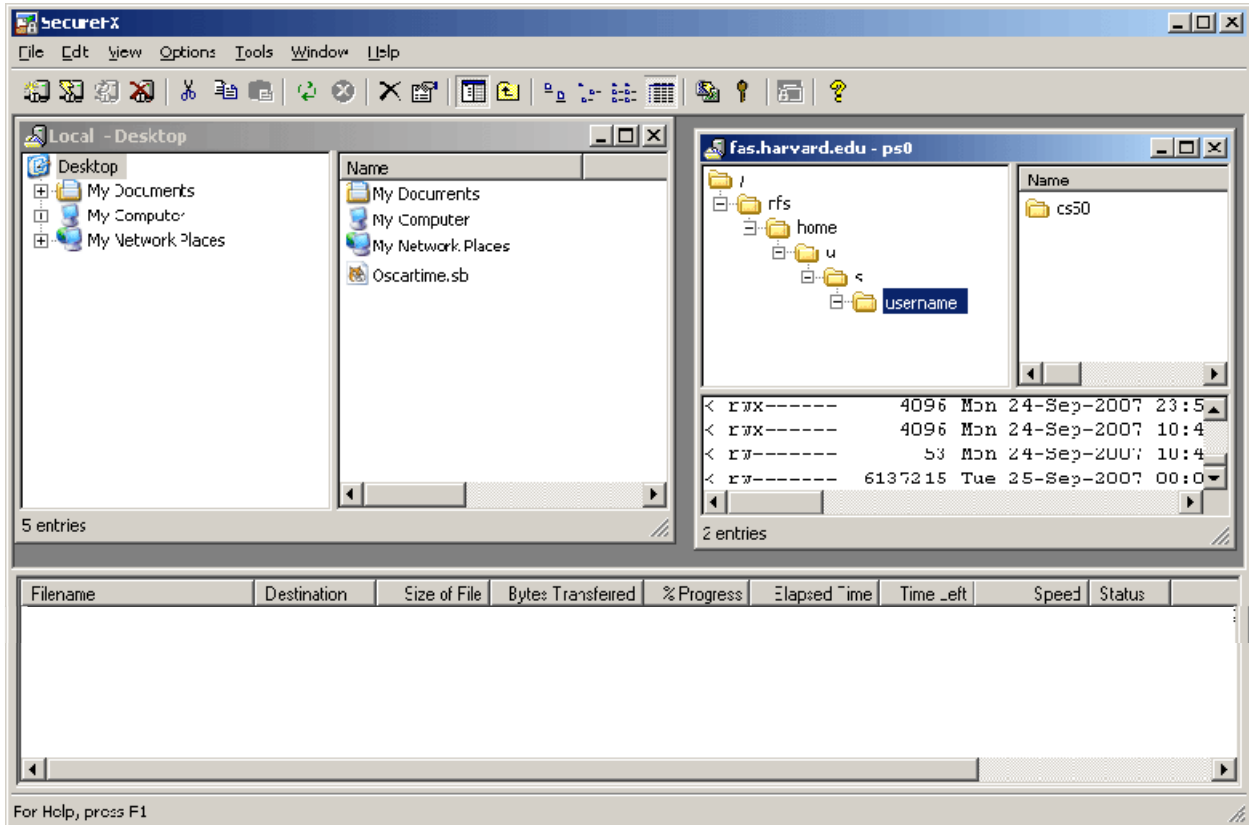
Launch SecureFX. Assuming you (or somebody) has already created and configured a session for `fas.harvard.edu`, you should see a window like the below.



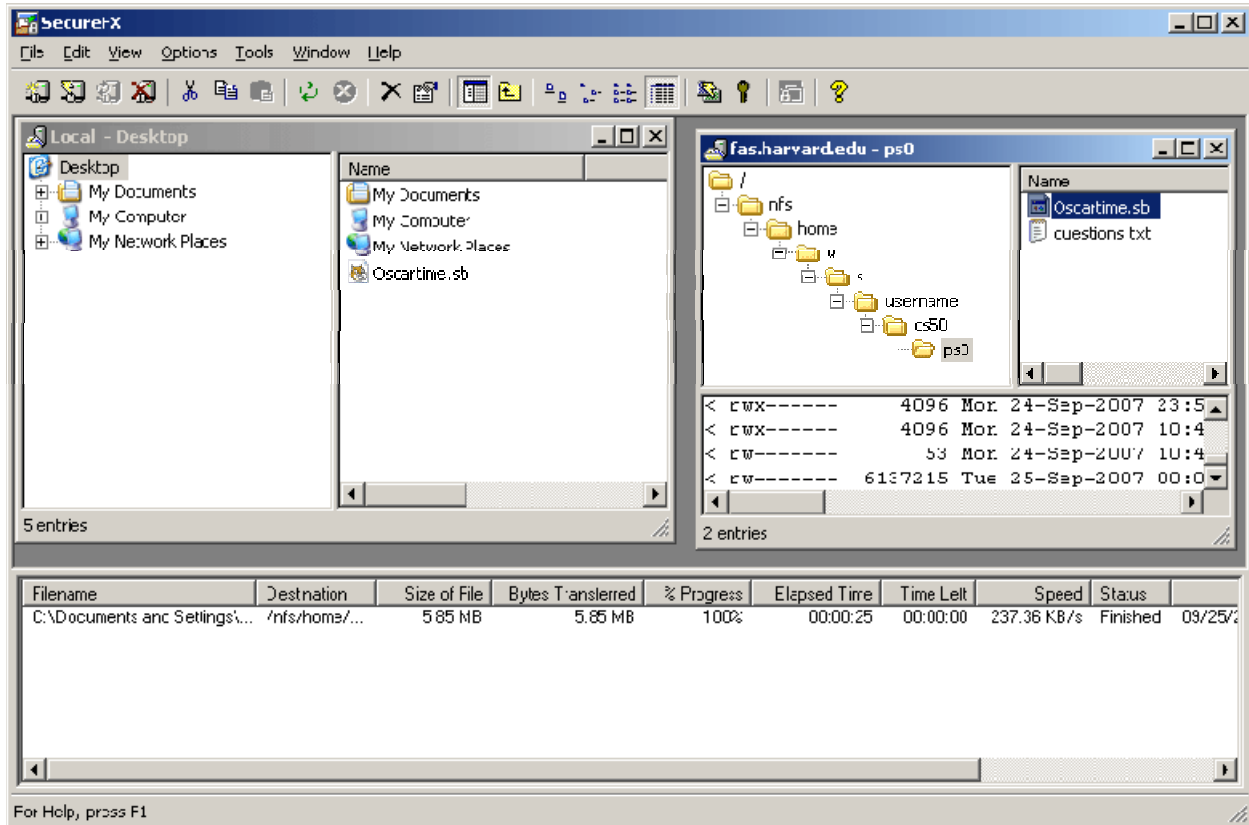
Highlight `fas.harvard.edu` by clicking it, then click **Connect**. If you see a window like the below, click **Accept & Save**.



Provide your username and password if prompted. A window containing at least two smaller windows should then appear, much like the below. Even if your own smaller windows are arranged differently, you should find that one provides you with access to the contents of your local computer, while another provides you with access to the contents of your home directory.



Navigate your way to the file(s) that you would like to upload by double-clicking the appropriate icons within the window representing your local computer. Then, navigate your way to the directory to which you would like to upload one or more files by double-clicking the appropriate icons in your home directory's window. Click the file(s) that you would like to upload and drag the file(s) to their destination within your home directory. You may see, toward the bottom of SecureFX's window, the upload's progression. Once the upload is complete, your window should resemble the below.¹



May that you never have to read all of these directions again!

¹ Perhaps needless to say, this screenshot suggests that username uploaded `Oscartime.sb` from his or her desktop to his or her `~/cs50/ps0/` directory.